

Gefico

Maritime Sector



0.1	About us	3
0.2	Maritime services	4
0.3	Global impact	5
0.4	Watermakers	6
	0.4.1 Evaporators	6
	0.4.2 Reverse Osmosis	10
0.5	Customized units	13
0.6	Water treatment	14
0.7	Antifouling systems	17
0.8	References	20

GEFICO

Gefico is a leading company that designs, develops and supplies solutions to customers for the water treatment market.

Over the past 35 years, Gefico has been manufacturing equipment for diverse sectors such as maritime, oil and gas and industry.

Our products and solutions are intended to operate in extremely harsh conditions. With more of 7000 offshore and inland installations, we cover globe with worldwide solutions.

In 2011, Gefico became part of industrial group Cetus . With a quality product certificate, the group focuses on sustainability and environmental solutions, holding several innovation awards and CSR (Corporate Social Responsibility).

Environmental impact is one of our main concerns. We therefore work to minimize negative impact on the environment by continuously developing new opportunities compatible with sustainable development.



SERVICES

Gefico assist ship-owners and shipyards within the maritime industry with a wide range of products.

Special equipments has been developed to ensure an adequate safety and reliability.

Our company designs and manufactures a wide range of plants for desalination by means of Reverse Osmosis and Evaporation, seawater pretreatment and potable water treatment for human consumption, and antifouling systems to avoid and prevent the biological growth.

We understand our customers, thus we are awarded about how important is to support them wherever they are. For this reason, we also focus on strengthening our After Sales services on being able to send spare parts across the globe.

The Gefico after sales service is ready to reply and provide service to our customers with the most efficient and quick way to solve their inquiries:

- SpareParts
- Technical Support
- Commissioning and Start-Up
- Trainning



Cruise Roma. Equipped with 4 fresh water generators Gefico Evaporators, model AQ-60/70A.

GLOBAL IMPACT

Gefico is a global company with worldwide agents and distributors.

Our agents are prepared to give assistance to our customers wherever they are.

Africa: Egypt, Mauritania, Morocco, Mozambique, Namibia, Tunisia.

America: USA, Canada, Mexico, Panama, Argentina, Brazil, Chile, Ecuador, Uruguay, Venezuela, Colombia, Peru.

Europe: Germany, Belgium, Bulgaria, Croatia, Denmark, Scotland, Estonia, Finland, France, Greece, Holland, England, Ireland, Iceland, Faroe Islands, Italy, Norway, Poland, Portugal, Romania, Russia, Sweden, Turkey.

Asia & Pacific: China, Dubai, Hong Kong, India, Indonesia, Korea, Malaysia, Pakistan, Singapore, Philippines, Australia, New Zealand.



EVAPORATORS

Gefico evaporators unit operates with a vacuum system using tubing. Our evaporators are able to produce high-quality distillate in order to maintain boiler-water levels. The energy source for producing fresh water utilizes waste heat improving energy efficiency.

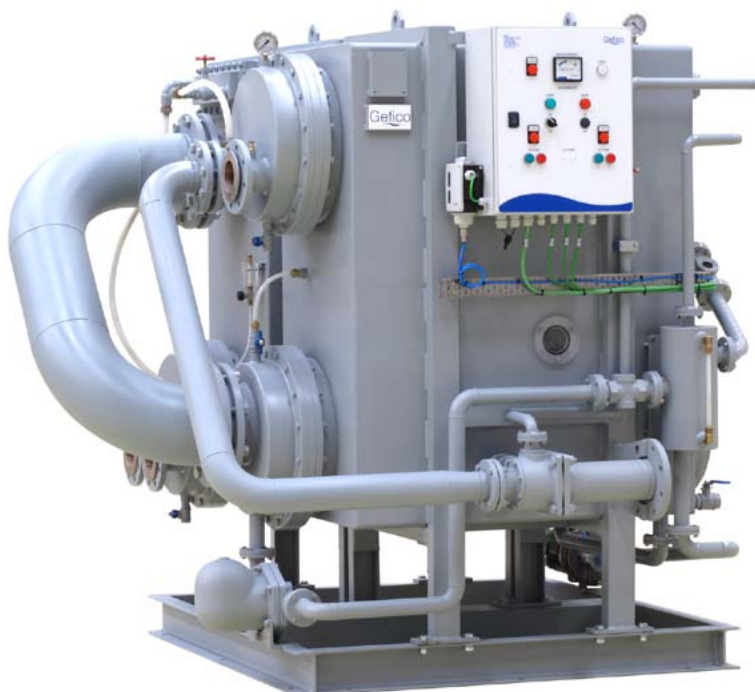
Our Evaporators treats all water as a source, i.e. sea water, brackish water, The solution that contains the desired product can be sea water, brackish water, surface water, etc.

Evaporators Gefico are installed onboard to produce different waters:

1. Technical Water: intended for boilers, cooling system and any process.
2. Potable Water: Potable water is water that is safe for humans to drink.

When the waste heat is not enough for operate in good conditions, the Gefico's Double Stage Evaporator are the best solution for producing distilled water. Consumption of these equipments is reduced by 50% with respect to a simple stage.

Gefico manufactures Flash Evaporators which are employed for producing fresh water from sea water by using the source of heat from jacket cooling water from a ship's main engine.



Gefico double stage Evaporator, model AQ-25/2.

Small range. 1 to 10 ton/day

MODEL	AQ-1/2	AQ-2/3	AQ-3/4A	AQ-4/5A	AQ-5/6A	AQ-6/8	AQ-8/10	AQ-10/12
PRODUCTION (m3/day)	1	2	3	4	5	6	8	10
WEIGHT (Kg)	184	191	210	390	423	540	587	642
ENERGY (Kw)	30	61	92	122	153	184	245	308
DIMENSIONS								
Length (mm)	760	860	1000	1080	1220	1123	1350	1550
Width (mm)	495	495	495	560	560	700	700	700
Height (mm)	680	680	680	900	900	1070	1070	1070



Evaporator model AQ-4/5A.



Evaporator model AQ-16/20.

Top range. 12 to 25 ton/day

MODEL	AQ-12/16	AQ-16/20A	AQ-20/25A	AQ-25/30A
PRODUCTION (m3/day)	12	16	20	25
WEIGHT (Kg)	800	1100	1375	1666
ENERGY (Kw)	355	480	610	730
DIMENSIONS				
Length (mm)	1490	1490	1800	2060
Width (mm)	850	950	1050	1050
Height (mm)	1310	1510	1760	1760

Modular range. 30 to 100 ton/day

MODEL	AQ-30/35A	AQ-35/40A	AQ-40/50A	AQ-50/60A	AQ-60/70A	AQ-80/100A	AQ-100/120A
PRODUCTION (m3/day)	30	35	40	50	60	80	100
WEIGHT (Kg)	2250	2340	2450	3400	3900	4400	4900
ENERGY (Kw)	880	1120	1210	1480	1765	2370	2958
DIMENSIONS							
Length (mm)	2780	2780	2780	3190	3190	3250	3250
Width (mm)	1485	1485	1485	1485	1595	1820	1925
Height (mm)	2200	2200	2200	2200	2370	2370	2370



Evaporator model AQ-25/2.



Evaporator model AQ-60/70.

Double stage range. 5 to 100 ton/day

MODEL	AQ-5/2	AQ-12/2	AQ-25/2	AQ-40/2	AQ-60/2	AQ-75/2	AQ-100/2
PRODUCTION (m3/day)	5	12	25	40	60	75	100
WEIGHT (Kg)	750	1170	2040	3400	4700	5800	7200
ENERGY (Kw)	80	192	420	682	1030	1160	1546
DIMENSIONS							
Length (mm)	1220	1370	1985	2540	2820	4250	4250
Width (mm)	1100	1190	1730	2000	2395	2600	2725
Height (mm)	900	1100	1840	2060	2120	2430	2430

OUR CUSTOMERS

"Cruise Roma & Barcelona"

Four evaporator plants model AQ-60/70A each vessel.



"Grande Africa"

One single stage evaporator plant model AQ-30/35A.



"Ignacy Daszynski"

One single stage evaporator plant model AQ-16/20A.



"Lagan Viking"

Two single stage evaporator plants model AQ-16/20A.



REVERSE OSMOSIS

The Gefico Reverse Osmosis Unit uses reverse osmosis method. Solute is retained on the pressurized side of the semipermeable membrane and the pure solvent is allowed to pass to the other side and consequently salt cannot pass through the membrane.

Our RO Units can treat water to be used as potable water or intended for the industry or agriculture sector ensuring the minimum consumption.

With our Reverse Osmosis product range, we cover needs from 1,6 to 500 tons per day.

Gefico's unit are modular made. All components are installed in a common frame so only the Booster Pump, Disc Filter and Dechlorination filter are independently supplied for the installation at the feed flow.



Reverse Osmosis plant Gefico, model AQE-120DDA explosion proof.

Small range. 1,6 to 30 ton/day

MODEL	AQE-2D	AQE-4D	AQE-6D	AQE-10D	AQE-15D	AQE-18D	AQE-20D	AQE-25D	AQE-30MD
PRODUCTION (m3/day)	1,6	3,2	4,8	8	12	15	20	25	30
WEIGHT (Kg)	120	130	140	380	415	432	520	550	580
DIMENSIONS									
Length (mm)	1300	1300	1300	1570	1570	1570	1514	1514	1521
Width (mm)	740	740	740	990	990	990	1210	1210	1210
Height (mm)	660	660	660	890	890	940	910	910	910



Reverse Osmosis model AQE-20D.



Reverse Osmosis model AQE-60D-SS.

Top range. 40 to 250 ton/day

MODEL	AQE-30D	AQE-60D	AQE-80D	AQE-100	AQE-120D	AQE-250D
PRODUCTION (m3/day)	40	50	70	80	150	250
WEIGHT (Kg)	950	1050	1340	1450	1560	2100
DIMENSIONS						
Length (mm)	2200	2200	2200	2200	3204	3204
Width (mm)	1418	1418	1840	1840	1840	1840
Height (mm)	1230	1230	1580	1580	1691	1691

OUR CUSTOMERS

“Erviken”

One Reverse Osmosis plant model AQE-18D.



“Lyubov Orlova”

Polar cruise with One Reverse Osmosis plant model AQE-60.



“Sarmiento de Gamboa”

Oceanographic vessel with two Reverse Osmosis plant model 2 x AQE-10D.



“Clelia II”

One Reverse Osmosis plants model AQE-25D.



CUSTOMIZED UNITS

Gefico offers the possibility of developing different proposals for RO systems in compliance with different regulations, required specifications, customer's requirements:

- Stainless steel
- Duplex steel
- ATEX regulations
- Contained systems



Contained Reverse Osmosis plant.



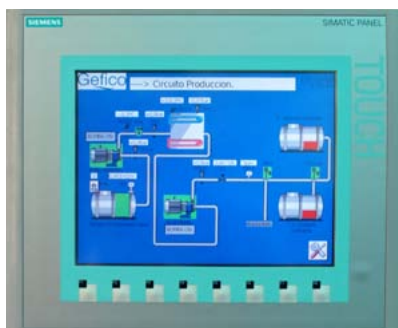
Reverse Osmosis plant model AQE-15DHHTS.

AUTOMATIC PROCESS

Our watermakers can be supplied fully automatic for monitoring and control.

This control allows a further optimization of the process, through the possibility of carrying out analysis of the several parameters that affect to production.

Our installations can be controlled locally or by a remote system TCP / IP that allows to the customer analyze and check all process factors.



Control software for Gefico plant.

WATER TREATMENT

Gefico supplies a wide range of products for water treatment:

MHF Rehardening filters

To avoid corrosion in the subsequent parts of the ships distribution system the pH-correction of produced distillate is absolutely necessary.

The pH-adjustment of the distillate is effected during its flow through the Rehardening Filter. In addition, MHF filters provides the correct hardness to distilled water.

UV sterilizer lamps

Ultraviolet lamps are used to deliver sterilized drinking water.

Gefico dosing systems

The Gefico dosing systems are used for:

- Seawater Treatment
- Drinking Water Treatment

Gefico Carbon filters

Potable water post-treatment:

- To eliminate flavours and odors
- To remove chlorine contents



Mineralizer filter Gefico model MHF-3500

OUR CUSTOMERS

"Arbol Grande"

One double stage evaporator plant with mineralizer filter model MHF-3500.



"Bigfoot 3"

One Reverse Osmosis plant with UV sterilizer lamps models UBK-2 and UB2-3.



"Edda Fides"

Complete system for potable water post-treatment for flotel vessel.



"Bourbon Oceanteam 101"

Potable water post-treatment.



WATER TREATMENT

Potable water heaters

Our water heater consists in a pressurized tank which incorporates electric resistances heating, thermostats and sensors PT-100 for temperature control, a safety valve, level switches and electrical controls.

It also incorporates a recirculation pump to maintain hot water temperature in different pipes.

Tank heaters are supplied insulated, thus ensuring a low temperature of the tank.

Hydrophore tanks

Hydrophore tanks are used in the fresh water system to keep the entire water circuit with the suitable pressure, in order to can supply the fresh water to different parts and heights of the installation for any purpose.

These Gefico hydrophores are designed to store and provide the fresh water at a pressure of 6 bar.



Gefico hydrophore tank of 500 liters capacity.

ANTIFOULING SYSTEM

The Biological Seawater contained in the sea water can cause marine growth in the cooling system.

Marine growth reduces the volume of water flowing through the system and minimizes the cooling effect. As a result the working temperature of the components connected to the cooling system increases.

The solution is a mechanical cleaning in order to eliminate the marine growth from the piping system. Such a mechanical cleaning requires turn off the whole system, which means time consuming.

Gefico has developed the Gefico copper ion generator to solve this problem.

The Gefico's Antifouling system prevents marine growth by releasing copper ions into seawater utilising a small electrical DC current.

With a seawater treatment capacity from 200 to 2500 cubic meters per day.

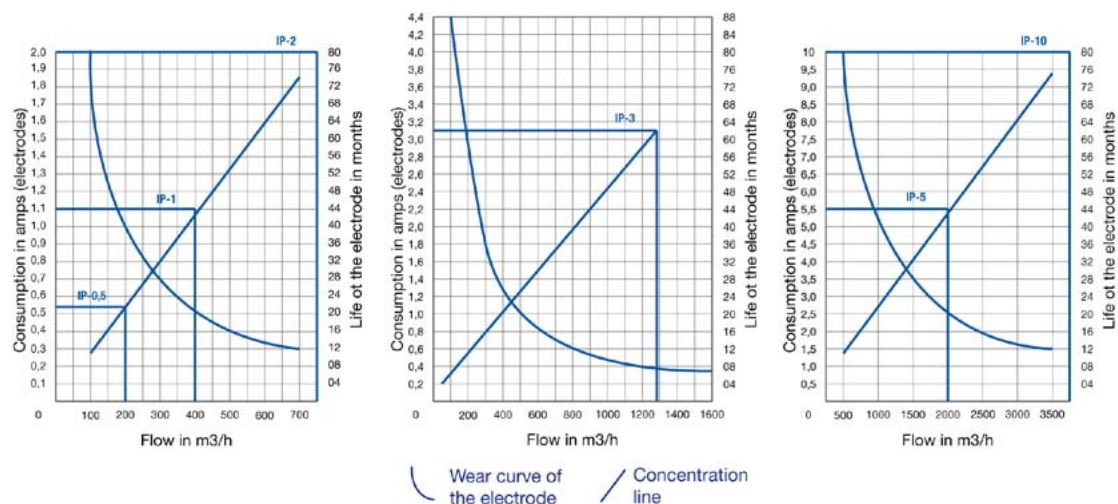
We also have ion copper-aluminium generators to prevent and avoid corrosion further the biological growth.



Gefico Antifouling systems by ion injection of copper and aluminium.

Antifouling system. Treatment capacity from 200 to 2500 ton/day

MODEL	IP-0,5	IP-1	IP-2	IP-3	IP-5	IP-10
PRODUCTION (m3/day)	200	400	700	1200	2000	2500
ENERGY (Kw)	0,04	0,5	0,5	1,5	2	2
DIMENSIONS						
Length (mm)	483	483	483	610	710	710
Width (mm)	395	395	395	530	770	770
Height (mm)	637	637	637	820	790	790
CONTROL PANEL						
Length (mm)	200	400	400	400	400	400
Width (mm)	300	500	500	500	500	500
Height (mm)	150	200	200	200	200	200



Selection graphic tables for antifouling.

OUR CUSTOMERS

"Far Sailor"

Offshore Supply Vessel with one antifouling system model IP-0'5.



"Miguel de Cervantes"

Rescue ship with one Antifouling system model IP-3.



"Island Wellserver"

Offshore service vessel with one Antifouling system model IP-2 and one IP-3.



"Viking Poseidon"

Offshore Construction Vessel with one Anti-fouling system model IP-3 and one IP-0'5.



EVAPORATORS CUSTOMERS. June 2012 - 2011

Final Customer	Country	Unit	Year
Ibermat	France	1 x AQ-2/3	2012
Ferus Smit	Holland	1 x AQ-10/12	2012
Grindrod Marine	South Africa	1 x AQ-4/5A	2012
Marinsa	USA	1 x AQ-5/6	2012
STX	Norway	1 x AQ-10/12	2012
Avencatun	Venezuela	1 x AQ-10/12	2012
Fincantieri	Italy	1 x AQ-25/2	2012
Ferus Smit	Holland	1 x AQ-10/12	2012
Stavanger	Norway	1 x AQ-30/35A	2012
Jong Syhyn Shipbuilding	Taiwan	1 x AQ-5/6A	2012
Petromarine Bordeaux	France	1 x AQ-8/10	2012
Talley's Fisheries	New Zealand	1 x AQ-6/8	2012
STX	Norway	1 x AQ-10/12	2012
Jong Syhyn Shipbuilding	Taiwan	1 x AQ-5/6A	2012
Chowgule and Company PVT	India	1 x AQ-3/4A	2012
C.N.F.C. Victory Return Corp.	China	5 x AQ-2/3	2012
Tae Yeung Engineering	Korea	1 x AQ-6/8	2012
Metalships & Docks	Spain	2 x AQ-25/2	2012
Nirsa	Ecuador	1 x AQ-12/16	2012
Reikon	Holland	1 x AQ-10/12	2011
Trans-Pacific Journey	Philippines	1 x AQ-6/8	2011
Nb Maritime Management	Cyprus	1 x AQ-4/5A	2011
Marinsa	USA	1 x AQ-3/4A	2011
Iberopesca	Ecuador	1 x AQ-3/4A	2011
Txopituna	Spain	1 x AQ-8/10	2011

EVAPORATORS CUSTOMERS. June 2012 - 2011

Final Customer	Country	Unit	Year
Overseas Marine Service	Spain	1 x AQ-3/4A	2011
Marinsa	USA	1 x AQ-10/12	2011
Pescanova	Spain	2 x AQ-4/5A	2011
Pescanova	Spain	1 x AQ-2/3	2011
Albacora	Spain	1 x AQ-8/10	2011
Reki	Iceland	1 x AQ-8/10	2011
Illante	Spain	1 x AQ-3/4A	2011
Nirsa	Ecuador	1 x AQ-12/16	2011
Merlus Fishing PTY Ltd	Namibia	1 x AQ-4/5A	2011
Merlus Fishing PTY Ltd	Namibia	1 x AQ-8/10	2011
Albacora	Spain	3 x AQ-10/12	2011
Illante	Spain	1 x AQ-2/3	2011
Trans-Pacific Journey	Philippines	1 x AQ-6/8	2011
JSC Murmanrybflot	Russia	1 x AQ-8/10	2011
Martimex	Slovakia	1 x AQ-3/4A	2011
Atunera Caribe	Panama	1 x AQ-10/12	2011
C.N.F.C. Victory Return Corp.	China	3 x AQ-2/3	2011
Tae Yeung Engineering	Korea	1 x AQ-4/5A	2011
Slovenske Lodenice Komarno	Slovakia	1 x AQ-3/4A	2011
Illante	Spain	2 x AQ-4/5A	2011
Chowgule and Company PVT	India	1 x AQ-3/4A	2011
Johansen Slip & Mek.	Norway	1 x AQ-2/3	2011
Talleres del Caribe	Ecuador	1 x AQ-6/8	2011
Tae Yeung Engineering	Korea	1 x AQ-6/8	2011
Russian Navy	Russia	2 x AQ-50/60A	2011

EVAPORATORS CUSTOMERS. June 2012 - 2011

Final Customer	Country	Unit	Year
Reikon	Holland	2 x AQ-2/3	2011
Slovenske Lodenice Komarno	Slovakia	1 x AQ-3/4A	2011
Chowgule and Company PVT	India	1 x AQ-3/4A	2011
Senzer	Ecuador	1 x AQ-3/4A	2011
Insung Corporation	Korea	1 x AQ-6/8	2011
Astilleros Murueta	Spain	1 x AQ-8/10	2011
Slovenske Lodenice Komarno	Slovakia	1 x AQ-3/4A	2011
Trans-Pacific Journey	Philippines	1 x AQ-6/8	2011
Marinsa	USA	1 x AQ-4/5A	2011
Bumi Armada	Singapore	1 x AQ-16/20A	2011
Chowgule and Company PVT	India	2 x AQ-3/4A	2011
Slovenske Lodenice Komarno	Slovakia	1 x AQ-3/4A	2011
Sodoca	Portugal	1 x AQ-2/3	2011
Belgacom	Belgium	1 x AQ-1/2	2011
Synergas	Italy	1 x AQ-10/12	2011

REVERSE OSMOSIS CUSTOMERS. June 2012 - 2011

Final Customer	Country	Unit	Year
Illante	Spain	1 x AQE-6D	2012
Jong Syhyn Shipbuilding	Taiwan	1 x AQE-15D	2012
Illante	Spain	1 x AQE-6D	2012
Barkston Management Ltd	Denmark	1 x AQE-20D	2012
Pescanova	Spain	1 x AQE-15D	2012
Bumi Armada	Singapore	2 x AQE-120D	2012
Talleres Cillero	Spain	1 x AQE-4D	2012
Yuzhmorbyflot OJSC	Russia	3 x AQE-6D	2012
Jong Syhyn Shipbuilding	Taiwan	1 x AQE-10D	2012
Damen Shipyard	Holland	1 x AQE-4D	2012
Technology Ventures Middle East	UAE	1 x AQE-25D	2012
Illante	Spain	1 x AQE-6D	2012
Serck Como	Germany	1 x AQE-20D	2012
Redox Trading Company Ltd	Taiwan	2 x AQE-4D	2012
Jong Syhyn Shipbuilding	Taiwan	1 x AQE-10D	2012
Serck Como	Germany	1 x AQE-6D	2012
Reikon	Holland	1 x AQE-15D	2012
Reikon	Holland	1 x AQE-6D	2012
Damen Shipyard	Holland	1 x AQE-4D	2012
Industmarine Engineers Ltd	Singapore	2 x AQE-15D	2012
Bina Marine	Singapore	1 x AQE-6D	2011
Otto	Singapore	2 x AQE-6D	2011
Illante	Spain	1 x AQE-6D	2011
Damen Shipyard	Holland	1 x AQE-4D	2011
Serck Como	Germany	1 x AQE-30MD	2011

REVERSE OSMOSIS CUSTOMERS. June 2012 - 2011

Final Customer	Country	Unit	Year
Damen Shipyard	Holland	2 x AQE-6D	2011
Dubai Shipbuilding	UAE	1 x AQE-10D	2011
Norsk Atlas	Norway	2 x AQE-6D	2011
Illante	Spain	1 x AQE-10D	2011
Ust'ilych	Russia	2 x AQE-60D	2011
Reikon	Holland	2 x AQE-6D	2011
Air Moteur service	France	1 x AQE-10D	2011
De Haas Maassluis Shipyard	Holland	1 x AQE-4D	2011
Illante	Spain	1 x AQE-6D	2011
Dok Dan Perkaplan	Singapore	1 x AQE-20D	2011
Terem-krz	Bulgaria	2 x AQE-15D	2011
Sodoca	Portugal	1 x AQE-6D	2011
Bina Marine	Singapore	1 x AQE-10D	2011
Dubai Shipbuilding	UAE	1 x AQE-10D	2011
Industmarine Engineers Ltd	Singapore	1 x AQE-10D	2011
Grindrod Marine Services	South Africa	1 x AQE-10D	2011
Industmarine Engineers Ltd	Singapore	2 x AQE-10D	2011
Jiangsu Zhenjiang Shipyard	Singapore	2 x AQE-30MD	2011
Technology Ventures Middle East	UAE	1 x AQE-6D	2011
Reikon	Holland	1 x AQE-6D	2011
Technology Ventures Middle East	UAE	2 x AQE-6D	2011
Technology Ventures Middle East	UAE	2 x AQE-15DHTS	2011
Illante	Spain	1 x AQE-6D	2011
Martrade SRL	Romania	1 x AQE-60	2011
Reikon	Holland	1 x AQE-6D	2011

REVERSE OSMOSIS CUSTOMERS. June 2012 - 2011

Final Customer	Country	Unit	Year
Astilleros Armon	Spain	2 x AQE-6D	2011
Technology Ventures Middle East	UAE	1 x AQE-15D	2011
Technology Ventures Middle East	UAE	1 x AQE-25D	2011
Industmarine Engineers Ltd	Singapore	1 x AQE-10D	2011
Redox Trading Company Ltd	Taiwan	2 x AQE-4D	2011
Russian Navy	Russia	1 x AQE-15D	2011
Terem krz	Bulgaria	1 x AQE-15D	2011
Technology Ventures Middle East	UAE	1 x AQE-20D	2011
MW Brands	Ghana	3 x AQE-10D	2011
Talleres Baña	Spain	1 x AQE-4D	2011
Unilog	South Africa	1 x AQE-15D	2011
Reikon	Holland	2 x AQE-4D	2011
Illante	Spain	2 x AQE-4D	2011
Air Moteur Service	France	1 x AQE-10D	2011
Astilleros Mercurio Plastics	Spain	1 x AQE-4D	2011
Sodoca	Portugal	1 x AQE-4D	2011
Ezra Hull	Singapore	2 x AQE-20D	2011
Industmarine Engineers Ltd	Singapore	2 x AQE-60D	2011
Ostrowski	Poland	1 x AQE-4D	2011
Rederij Groen	Holland	1 x AQE-4D	2011
Damen Shipyard	Holland	1 x AQE-4D	2011

ANTIFOULING SYSTEM CUSTOMERS. June 2012 - 2011

Final Customer	Country	Unit	Year
Illante	Spain	1 x IP-1	2012
Detroit Chile SA	Chile	1 x IP-1, 1 x IP-2	2012
Reikon	Holland	1 x IP-3	2012
Benis Peche Sarl	Morocco	1 x IP-1AI	2012
STX	Norway	1 x IP-0,5	2012
Sodoca	Portugal	1 x IP-0,5	2012
Gisan Shipyard	Turkey	1 x IP-1AI	2011
Duzgit Shipbuilding	Turkey	2 x IP-2AI	2011
Armement La Paloma	Spain	2 x IP-1	2011
Selah Shipyard	Turkey	1 x IP-2AI	2011
Astilleros Armon	Spain	2 x IP-1	2011
F&K Marine Supply	USA	1 x IP-3	2011
Norsk Atlas	Norway	2 x IP-3	2011
Norsk Atlas	Norway	2 x IP-1	2011
Cimtas Shipyard	Turkey	1 x IP-1AI	2011
Ibermat	France	1 x IP-0,5	2011
Benis Peche Sarl	Morocco	1 x IP-1AI	2011
Bumi Armada	Singapore	1 x IP-5	2011
Norsk Atlas	Norway	1 x IP-2	2011
Sodoca	Portugal	1 x IP-0,5	2011
Pesquera Jadran	Chile	1 x IP-3AI	2011
Parlevliet & Van Der Plas	Holland	1 x IP-3	2011
Chantiers Piriou	France	1 x IP-0,5	2011
Sodoca	Portugal	1 x IP-0,5	2011
Turker Shipyard	Turkey	1 x IP-2	2011

ANTIFOULING SYSTEM CUSTOMERS. June 2012 - 2011

Final Customer	Country	Unit	Year
Talley's Fisheries	New Zealand	1 x IP-0,5	2011
Niveko	Turkey	1 x IP-1	2011
Zhejiang Shipbuilding	Hong Kong	1 x IP-2	2011
Pesca Azteca	Mexico	1 x IP-3	2011
Zhejiang Shipbuilding	Hong Kong	1 x IP-2	2011
Niveko	Turkey	1 x IP-1	2011
M. Blanco	Spain	1 x IP-0,5	2011
Illante	Spain	1 x IP-1	2011
Sefine Shipyard	Turkey	1 x IP-2AI	2011
Parlevliet & Van Der Plas	Holland	1 x IP-3	2011
Gisan Shipyard	Turkey	1 x IP-2	2011
C.N.F.C.	China	4 x IP-1	2011
Unión Naval Valencia SA	Spain	1 x IP-0,5	2011
Unión Naval Valencia SA	Spain	1 x IP-0,5	2011
Unión Naval Valencia SA	Spain	1 x IP-0,5	2011
Talleres Baña	Spain	1 x IP-1	2011

Polígono O Acevedo, Parcela A
15185 Cerceda - A Coruña, Spain
Tel +34 981 250 111 - Fax +34 981 258 439
Email: gefico@gefico.com
www.gefico.com

Gefico

Excellence in water



Gefico cannot accept responsibility for possible errors in catalogs, brochures and other printed material. Gefico reserves the right to alter its products without notice. This also applies to products already on order provided that such alterations can be made without subsequential changes being necessary in specifications already agreed.